




**Fires cannot cause a nuisance to neighbors**  
– To reduce smoke, burn small, hot fires, and give them lots of air. If smoke from your fire bothers your neighbors or damages their property, you must put it out immediately.



**Burning trash is illegal, everywhere, all the time** – Trash is anything that is not dry/seasoned wood, manufactured logs, or charcoal. Burn barrels are also illegal.



**Land-clearing fires** – Commonly associated with commercial construction operations, these fires are prohibited in King, Kitsap, Pierce and Snohomish Counties. Developers are required to use alternatives to burning such as on-site chipping and removal, or off-site wood waste recycling.




**Know the laws about outdoor fires** – Always check with your local fire department to find out what rules apply in your area before starting any outdoor fire. For more info visit: [pscleanair.org/outdoorfires](http://pscleanair.org/outdoorfires)



**Hauled Material** – Outdoor fires cannot include material hauled from another property unless it is seasoned firewood.


# What you should know about Outdoor Fires



**Don't get burned** – Violating outdoor burning regulations can be costly. Fines typically start at \$1,000 and can exceed \$17,000 per day, plus reimbursement costs for fire department responses.



**Agricultural Burning** – Agricultural burning permits are available only to commercial agricultural operations where burning is necessary and meets criteria for best management practices. For more information on agricultural burning permits call (206) 343-8800 or (800) 552-3565.



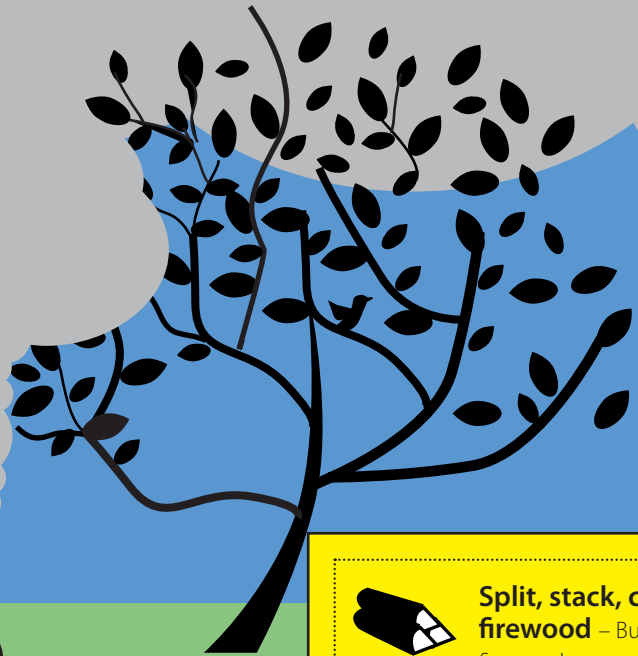
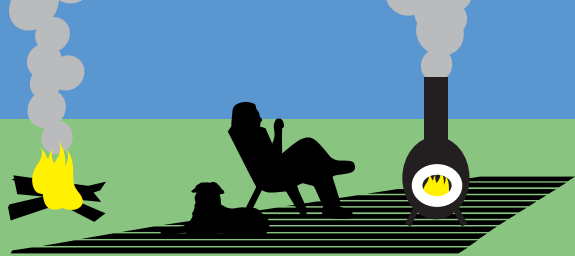
**What is a "recreational fire"?**  
Recreational fires include: cooking fires, campfires, and bonfires (permit required); as well as fires lit in chimeneas, fire pits, fire bowls, and similar free-standing devices. These fires may be allowed on private property and in designated public locations. The fuel must be limited to seasoned wood, manufactured logs, or charcoal. Fires used for debris disposal purposes are not considered recreational fires.



**Residential burning of yard waste** – Burning branches, weeds, grass clippings, etc. is not allowed at any time, in most areas. Check with your local fire district to learn whether burning is allowed in your area, and what restrictions or permit requirements apply. See back for alternatives.



**Split, stack, cover, and store firewood** – Burn only dry, seasoned firewood or manufactured logs. Wood should be dried for at least one year.



# Health Effects of Breathing Smoke



## Short-Term Effects

- Irritated eyes, lung, throat, sinuses
- Headaches and allergies
- Trouble breathing
- Asthma attacks



## Long-Term Effects

- Chronic lung disease
- Chronic bronchitis
- Emphysema
- Nose, throat, lung, blood and lymph system cancers
- Risk of heart attack and stroke

## Consider clean, healthy alternatives to burning yard waste:



### Curb It

Sign up with your county solid waste department to have yard waste picked up at the curb, or self-haul to a nearby recycling station.



### Compost It

Let your yard waste decompose and recycle it as an excellent fertilizer for your soil.



### Chip It

Rent or hire a chipping machine to turn branches into great mulch for your yard.

Solid waste departments may have alternatives to burning in your area:

**King County** ..... (206) 296-4466  
**Kitsap County** ..... (360) 337-5777  
**Pierce County**..... (253) 798-2179  
**Snohomish County** ..... (425) 388-3425

# Outdoor Fires

Know the law before you burn

[pscleanair.org](http://pscleanair.org)  
Puget Sound Clean Air Agency

Smoke from burning leaves and wood may seem harmless, but it's

**as dangerous as cigarette smoke.**

Burning garbage is even worse, and **always** illegal.

[pscleanair.org](http://pscleanair.org)  
Puget Sound Clean Air Agency