

## **WOODINVILLE FIRE & RESCUE**

**August 13, 2019**

### **SPECIAL MEETING OF THE BOARD OF FIRE COMMISSIONERS**

Woodinville Fire & Rescue Board Chair Roger Collins called the meeting to order at 1700 hours. Roll call was taken and those in attendance were as follows:

#### **Roll Call**

Commissioners Roger Collins, Jim Dorney, Tim Osgood, and Mike Millman of Woodinville Fire & Rescue; Commissioners Rick Verlinda, Don Ellis, Suzanne Greathouse, and Dave Maehren of the Northshore Fire Department; Commissioners David Harris, Ken Callahan, Kim Fischer, and Jon Kennison of the Shoreline Fire Department.

Commissioner Derek van Veen of Woodinville Fire & Rescue and Commissioner Rod Heivilin of the Shoreline Fire Department were absent.

Also in attendance was Fire Chief Gregory Ahearn of Woodinville Fire & Rescue; Acting Fire Chief Eric Magnuson of the Northshore Fire Department; Fire Chief Matt Cowan of the Shoreline Fire Department; Deputy Chief Erik Wallgren of Woodinville Fire & Rescue; Deputy Chiefs Tim Dahl and John Nankervis of the Shoreline Fire Department; Chief Administrative Officer Joan Montegary of Woodinville Fire & Rescue; Local 2950 President Ted Klinkenberg of Woodinville Fire & Rescue; Local 2459 President Anders Hansson of the Northshore Fire Department; Local 1760 President Gabe Debay of the Shoreline Fire Department; Board Secretary Nicole Frisch of Woodinville Fire & Rescue; and 28 members of the participating fire departments and public.

#### **Public Comments**

Mike Dee of Lake Forest Park thanked the Board members for having an open meeting on the topic of regionalization. He expressed concern that the meeting was not advertised to the public correctly or with what he thought was enough detail.

Commissioner van Veen of Woodinville Fire & Rescue arrived at 1705 hours.

#### **1. Board of Fire Commissioners Joint Discussion: Regionalization**

The Board of Commissioners and staff members of Woodinville Fire & Rescue, the Northshore Fire Department, and the Shoreline Fire Department discussed topics of mutual interest to include a comparative analysis for the three departments and a proposed administrative organizational chart attached hereto.

Commissioner Ellis of the Northshore Fire Department left at 1858 hours.

The Boards of Commissioners and Fire Chiefs discussed items of interest for a follow-up meeting. The Fire Chiefs will bring the following items to the Boards:

- Comparative analysis of Woodinville Fire & Rescue and the Northshore Fire Department response operations personnel using the Shoreline Fire Department Collective Bargaining Agreement, to include total cost of compensation for Woodinville Fire & Rescue and the Northshore Fire Department for 2020
- Draft organization chart for a consolidated staffing model for response operations personnel
- Outline of potential pitfalls of regionalization and a plan for mitigating issues

A sub-committee meeting was tentatively scheduled for August 26, 2019. The sub-committee will consist of two representatives from each of the three Boards, as well as representatives from Fire Department administration from each of the three departments.

## **2. Adjournment**

The meeting adjourned at 1924 hours.

  
\_\_\_\_\_  
Nicole Frisch, Board Secretary

## Three Department Comparative Analysis

	Northshore	Shoreline	Woodinville
Areas served	City of Kenmore (King) City of Lake Forest Park (King)	City of Shoreline (King) Town of Woodway (SnoCo; Contract)	City of Woodinville (King) Unincorporated areas of King County
Number of staffed stations	2	3	3
Approximate service area (sq. miles)	10	13.5	30
Approximate population served	36,570	57,720	36,682
2019 Assessed Valuation	\$8,125,201,992	\$10,942,263,005	\$10,855,819,664
2018 Total in-District Calls (excluding ALS)	2,397	8,541	3,322
2018 Total in-District ALS Calls	719	2,090	607
2018 Total ALS Calls	0	4,563	0
2018 Total Automatic/Mutual Aid Calls Given	793	270	680
2018 Total Automatic/Mutual Aid Calls Received	165	61	252
<b>2018 Total Responses</b>	<b>3,517</b>	<b>10,281</b>	<b>4,002</b>
<b>Staffing (at 7/31/2019)</b>			
Uniformed, exempt, non-rep	1	3	2
Non-Uniformed, exempt, non-rep	2	3	3.7*
Non-Uniformed, non-exempt, non-rep	3.5	5	0.5
Non-uniformed, non-exempt, represented	0	4	5
Uniformed, non-exempt, represented	43	108	53
<i>Division Chiefs</i>	0	2	0
<i>Battalion Chiefs</i>	4	4	4
<i>Fire Marshal</i>	0	1	0
<i>MSOs</i>	0	4	0
<i>Captains</i>	1	6	2**
<i>Lieutenants</i>	8	8	12
<i>Paramedics</i>	0	26	0
<i>Firefighters</i>	30	52	35
<i>Inspectors</i>	0	3	0
<i>PIO</i>	0	1	0
<i>Community Services Officer</i>	0	1	0
<b>Total</b>	<b>49.5</b>	<b>123</b>	<b>64.2</b>
<b>Minimum Daily Staffing</b> (incl Paramedics)	<b>9</b>	<b>23^</b>	<b>12</b>
Staffed Apparatus:			
Battalion Chief	1	1	1
Ladder Truck	0	1	1
Fire Engines	2	2	2
Aid Cars	1	3	3
Medical Service Officer	0	1	0
Medic Units	0	3	0
Heavy Rescue	1	0	0

	Northshore	Shoreline	Woodinville
<b>2019 Budget</b>			
<b>Overall Collection Rate</b>	\$1.22	\$1.61	\$1.40
<i>Levy Rate</i>	\$0.66	\$0.92	\$0.79
<i>Fire Benefit Charge Rate</i>	\$0.39	\$0.55	\$0.61
<i>Bond Debt Rate</i>	\$0.17	\$0.14	\$0.00
<b>Revenue</b>			
<i>Property tax levy</i>	\$ 5,398,451	\$ 10,083,624	\$ 8,594,571
<i>Benefit charge amount</i>	\$ 3,200,000	\$ 6,003,337	\$ 6,572,663
<i>In Lieu of Taxes</i>	\$ 28,400		\$ -
<i>EMS Levy amount</i>	\$ 432,644	\$ 766,930	\$ 594,280
<i>ALS Overhead</i>	\$ -	\$ 310,000	\$ -
<i>Permit/Plan Review revenue (est.)</i>	\$ 45,000	\$ 120,000	\$ 100,000
<i>GEMT Reimbursement from 2017/2018</i>		\$ 800,000	
<i>BLS Transport Reimbursement (incl. GEMT)</i>		\$ 1,130,000	
<i>Fire Service Contracts (10)</i>		\$ 966,981	
<i>Miscellaneous revenue (est.)</i>	\$ 65,000	\$ 85,000	\$ 75,000
<b>Total Revenue</b>	<b>\$ 9,169,495</b>	<b>\$ 20,265,872</b>	<b>\$ 15,936,514</b>
<b>Expenses</b>			
<i>Budgeted expenses</i>	\$ 8,918,243	\$ 18,408,556	\$ 14,233,046
<i>Budgeted capital expenses</i>	\$ -	\$ 1,222,000	\$ 818,638
<i>Budgeted reserves</i>	\$ 227,083	\$ 603,669	\$ 884,831
<b>Total Expenses</b>	<b>\$ 9,145,326</b>	<b>\$ 20,234,225</b>	<b>\$ 15,936,515</b>
<b>Fund Balances (at 7/31/2019)</b>			
<i>Expense Fund</i>	\$ 4,578,364	\$ 4,609,692	\$ 6,483,296
<i>CMT Expense (Shoreline)</i>		\$ 330,295	
<i>Benefit Svc Charge/Fire Benefit Fee Fund</i>	\$ -	\$ 809	\$ -
<i>Capital Fund</i>		\$ 3,247,800	\$ 1,044,212
<i>CIP 2015 (Shoreline)</i>		\$ 486,034	
<i>CIP 2018 (Shoreline)</i>		\$ 5,934,119	
<i>Reserve Funds</i>	\$ 7,892,405	\$ 4,090,847	\$ 9,345,633
<i>Benefits/Benefit Liability Reserve</i>		\$ 512,796	\$ 1,179,484
<i>Donation Fund 08 (Northshore)</i>	\$ 65,817		
<i>EMS Donation (Shoreline)</i>		\$ 42,768	
<i>Impact Fee (Shoreline)</i>		\$ 78,075	
<i>LTGO Bond (Shoreline)</i>		\$ 524,358	
<i>G.O. Bond</i>	\$ 602,621	\$ 695,265	
<i>Bond Lmts #8 (Shoreline)</i>		\$ -	
<b>Total Fund Balances</b>	<b>\$ 13,139,207</b>	<b>\$ 20,552,858</b>	<b>\$ 18,052,625</b>
<b>Debt Outstanding (at 6/30/19) (bonds, etc.)</b>	<b>\$ 12,898,793</b>	<b>\$ 13,180,000</b>	<b>\$ -</b>

**Notes:**

"Uniformed" means commissioned or sworn; it does not apply to civilian employees who wear a uniform at work.

\* IS Manager in Woodinville is full-time, but shared with Duvall; Duvall pays 30% of TCC.

\*\* Captain rank in Woodinville is a Lieutenant serving in a 3-year rotational Captain's position.

^ Staffing is 21 at night in Shoreline. When the medic units are above minimum staffing the paramedic moves to a suppression apparatus, which can also increase staffing levels.

Certain positions in Northshore and Woodinville are civilian (non-uniformed) that are Uniformed in Shoreline. For example: Fire Marshal and Inspectors in Shoreline are Uniformed/Represented. Deputy Fire Marshal in Woodinville is Non-Uniformed/Represented. Fire Marshal and Inspector in Northshore is Non-Uniformed/Non-Represented.

The CSO/PIO in Woodinville is Non-Uniformed/Represented. The PIO in Shoreline is Uniformed/Represented. The PIO in Northshore is also an Inspector and is Non-Uniformed/Non-Represented.

Two engines/aid cars are cross-staffed in Woodinville (Stations 33 and 35).

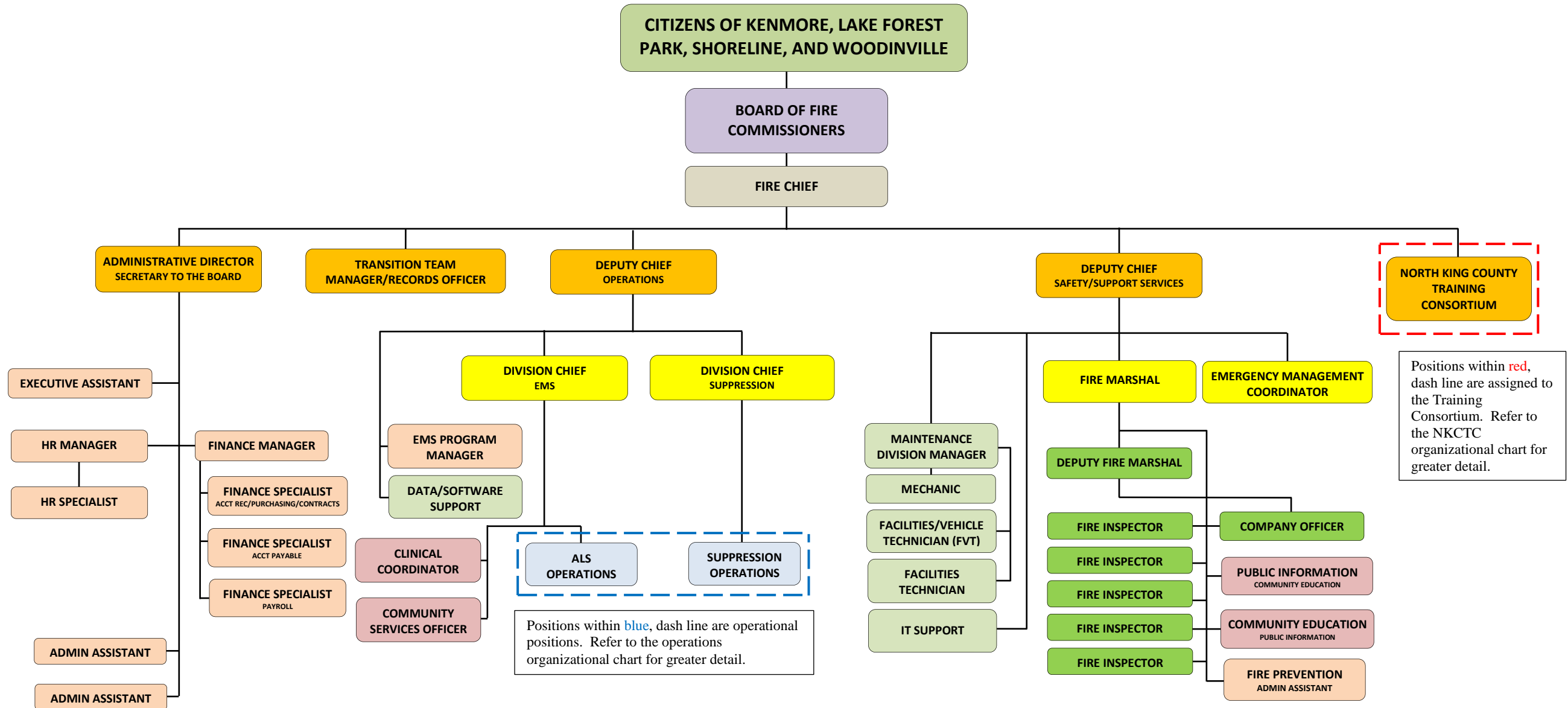
Rescue 151 and Aid 151 are cross-staffed in Northshore (Station 51)

All budget numbers for Shoreline are for suppression operations only. ALS budget is a completely separate program and budget.

# COMBINED NFD/SFD/WFR FIRE DEPARTMENT

## ORGANIZATIONAL CHART

**8-8-19**



———— Solid lines indicate chain of command, budget approval and daily activities supervision.

*For more detailed supervision, direction, and responsibilities refer to specific job descriptions.*